



# PARENT GUIDE



2011/12



**BIOLA**  
University



CAMPUS RESOURCES - INFORMATION FOR SUCCESS - LOCAL SIGHTS



Office of Parent Relations  
Biola University  
13800 Biola Ave.  
La Mirada, CA 90639  
(800) 99-BIOLA  
[www.biola.edu/parent](http://www.biola.edu/parent)

### About Our Guides

University Parent Media works closely with institutions around the country to bring together the most relevant, timely information into one all-inclusive resource.

We have published this guide with the mission of helping you easily navigate the university and its surrounding community. Ultimately, we hope these resources help nurture your connection and involvement in your student's college years!

### Make the Most of Your Parent Guide

- Hang on to your Guide! Inside you'll find information that's useful all-year long, including important phone numbers, web sites and calendars.
- Store your copy in a purse or glove compartment for convenient reference.
- Pass it along to parents of prospective college students to promote the school.
- Please recycle when finished!
- Discover more content, tips and local business information by visiting us online at: [www.universityparent.com/biola](http://www.universityparent.com/biola)

**University Parent Media**  
3800 Arapahoe Avenue, Suite 210  
Boulder, CO 80303  
Phone: (866) 721-1357  
Email: [ask@universityparent.com](mailto:ask@universityparent.com)

PUBLISHER  
**Sarah Schupp**

VP OF OPERATIONS  
**Jon Saints**

SALES REPRESENTATIVES  
**Allison Black**  
**Rebecca Boozan**  
**Daniel Condon**  
**Scott Griesser**  
**Sharon Haddad**  
**Kelsey Hudspeth**  
**Jon Hydeman**  
**Mimi Olin**  
**Emily Rayes**  
**AJ Virostek**

PRODUCTION DEPARTMENT  
**Grace Cassara**  
**Mike Gooley**  
**Eric Hosmer**  
**Lee Riley**  
**Meg Steinborn**

OFFICE MANAGER  
**Linsey Straugh**

DESIGNER  
**Ryan Pollard**

FOLLOW US ON:



The presence of Biola University logos and marks in this Guide does not mean the school endorses the products or services offered by advertisers in this Guide.

Advertising Inquiries:  
(866) 721-1357  
[ads@universityparent.com](mailto:ads@universityparent.com)

©2011 University Parent Magazines, Inc.



# contents

## 4 | Biola Guide

Comprehensive advice, information for campus success

4	A Note from President Corey	
5	Parent Relations	
6	The Biola Parent Association	
8	A Letter from the Dean of Students	
9	Student Stress Calendar	
11	Campus Life	
11	Student Transitions	15   Family Educational Rights and Privacy Act (FERPA)
11	Residence Life	16   Financial Aid
12	Commuter Life	16   Bursar Information
12	Off-Campus Housing Services	16   Campus Safety
12	International Student Services	17   Student Health Services
13	Athletics	18   Center for Career Development
13	Chapel	18   Student Employment
13	Department of Spiritual Life	19   IT Helpdesk
13	Biola Counseling Center	19   Bookstore
15	Academic Advising	19   Computer Store
15	Learning Center	19   Food Services
15	Registrar Services	

## 20 | Orange County Community

Make the most of your visit by getting to know the area

20	Welcome to the O.C.
22	All About the O.C.

## 24 | Resources

Must-have knowledge to navigate your way

24	Biola University Campus Map
26	2011-2012 Academic Calendar
28	Helpful Contact Information
30	Proud Supporters of Biola

# A Note from President Corey

**Dear Parent,**

As a father of an incoming Biola University freshman, I have a lot of the same feelings you have about entrusting your daughter or son to our care. I want you to know that the community at Biola is committed to being there for your child—I am counting on it!

We desire nothing less than for our students to build on the disciplines and values you fostered in them at home. Please be assured that our focus at every level is to create an environment where Biola students grow, learn, relate, ponder and are challenged to be all that God has for them. This is a sacred calling for us.

As you read this handbook published especially for you as parents, I trust you will find it helpful for you as you also go through the transition of sending your child to college.

**Blessings in Christ,**

**Barry H. Corey**  
President ■



# Parent Relations

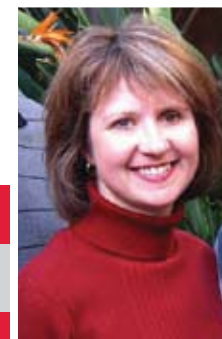
**Welcome to Biola! It is a privilege to be able to serve you and your family as your student begins his or her college career.**

Sending a child off to college is no easy task. As a parent, you have worked to provide a safe and nurturing atmosphere for your child. And now that he or she is entering college, you may wonder whether your student is ready to navigate this new environment on their own. Be assured that the faculty and staff of Biola are here to assist your son or daughter in their journey as college students.

Please know that the Office of Parent Relations is here to be of assistance to you, too! Parent Relations seeks to offer you the resources you need to support and encourage your student in their college career. The Parent Handbook is such a resource, providing you with comprehensive, yet concise information about the university and the student experience. Take the time to familiarize yourself with this booklet. We trust it will be a valuable source of information for you.

**Blessings,**

**Colleen Heykoop**  
Director, Parent Relations ■



# The Biola Parent Association

**The Office of Parent Relations is committed to strengthening relationships between the university and its parents. That is why we have a Biola Parents Association.**

All parents of Biola students are automatically members of the B.P.A., and as such, you can be ensured of receiving updates, pertinent information, and meaningful opportunities to connect to and serve with the Biola community.

Whether you are near or far, there is no shortage of opportunity to connect at Biola. Joining the Parent Council, volunteering at Biola Weekend, and sharing your Biola experience with prospective families, are just a few of the ways in which you can connect and serve here at Biola.

## Parent Council

The Biola Parent Council is designed to foster communication between the university and parents. The Council meets three times each year (August, October, March) and acts as liaisons to the Administration, provides hospitality at university events and works with specific fund-raising campaigns. You do not need to live locally to serve. Please contact the Office of Parent Relations for more information.

## Parents in Prayer

Visit our website to sign up to receive monthly emails from our Parents in Prayer Committee. You will have the opportunity to share your personal prayer requests as well as pray for other requests from the Biola community. Also, you will have the chance to participate in the Biola parents' prayer vigils.

## Parent-to-Parent Calling Campaign

Biola has found that parent-to-parent contact is a great addition to the recruitment and decision making process for families of prospective students. Beginning in February, we are seeking 120 current Biola parents to assist in calling 10 families each, of prospective students, in their local area. If interested in participating you will be provided with all of the information needed, including answers to FAQ's and a sample script.

## Family Events on Campus

### Biola Weekend

*October 14-15, 2011*

Parents, families, and alumni are invited to join our students on campus for "Biola Weekend"! Come meet your student's friends and enjoy two days of fun and fellowship. There will be a student festival, concerts and art shows, soccer games, and a special brunch with Dr. Barry H. Corey. Siblings will have some special activities just for them, too. Plan now to join us for this special weekend! ■



## Grandparents Day

*March 9, 2012*

**The Office of Parent Relations invites all grandparents of current Biola students to join their student for a full day of free events. This is a day designed to recognize and celebrate the special role that many grandparents play in their grandchild's life. Invitations will be mailed to grandparents in January. Not sure whether we have your grandparents' contact information? Call (800) 99-BIOLA to confirm.**

For more information visit [www.biola.edu/parent](http://www.biola.edu/parent)



## A Letter from the Dean of Students

**Eighteen years ago, I came to Biola and had the privilege of living among 120 undergraduate men as a Resident Director.**

I learned during that time that one of the most important things for me as a student development professional was knowing the difference between trying to fix a student versus seeing and hearing a student. During the college years, a student needs people older and wiser to take them in, pay attention, and listen to their heart so they can find answers to their own questions.

Ultimately, my job as Dean of Students is to make sure undergraduate students have all the tools and resources they need to be their best selves; all that God has created them to be. It is our work at Biola University to see that everything that is done in the classroom, in residence halls, in co-curricular programs, in relationships, and in knowledge gained reflects the unique mission of this

University – equipping men and women in mind and character to impact the world for the Lord Jesus Christ. We are here to aid in each student’s cumulative developmental experience at Biola University, offering challenges and support as they continue in the process of becoming all God has called them to be.

I look forward to partnering with you as your son or daughter begins their university journey of intellectual and spiritual growth.



**With a grateful heart,**

**Danny Paschall**  
Dean of Students ■

## Student Stress Calendar

The college years are an exciting time of growth and discovery for the college student, but with every season of growth there are times of challenge. Here we lay out for you the ‘typical’ stresses that students experience during their college years so you can anticipate their needs and know how to pray for them.

### FALL SEMESTER

#### September

- Homesickness—especially for freshman.
- International students sense confusion, vulnerability, and the lack of an advocate.
- Roommate differences.
- Feelings of inadequacy and inferiority develop because of the discrepancy between high school status and grades and initial college performance.
- Social adjustments: dating, new friendships.
- Students bring problems from summer into the new academic year.
- Academic pressure is beginning to mount.
- Pressure over plans for Thanksgiving; for some anxiety over being home for the first time.
- Depression and anxiety increase because of feelings that one should have adjusted to the college environment by now.
- Questions begin over whether to come back second semester.
- Students are meeting with academic advisors to discuss strategies for their remaining college years; freshmen tend to feel lost in this process.
- Registration takes place—confusion over major or career goals, frustration over not getting the classes they want or need.

#### October

- Freshmen begin to realize that life at college is not as perfect as they were led to believe.
- Overwhelmed by time management pressures.
- The novelty is gone; some question God’s leading to Biola.
- Grief develops because of inadequate skills for finding a group or not being selected by one.
- Non-dating students sense a loss of esteem because so much value is placed upon dates.
- Addictive behavior may start to surface.

#### November

- Economic anxiety: funds from summer earnings and parents begin to run out.

#### December

- Pressure and stress of school is side-stepped because Christmas is fast approaching. “Party spirit” is all-prevailing.
- Anxiety, fear, and guilt increase as final exams approach.
- Extra-curricular time strain: seasonal parties, concerts, social service projects, etc.
- Pre-Christmas depression: especially for those who have no home to visit, and for those who prefer not to go home because of family conflicts.
- Financial strain because of Christmas gifts, traveling costs, etc. ►

**SPRING SEMESTER****February**

- Anxiety, stress over family issues that surfaced over vacation (parents' impending divorce, illness, etc.)
- Renewed commitment to academics, but they still find it hard to follow through.
- Don't have the same energy for academics as they had in the fall; some students drop classes because they realize their fall load was too strenuous.

**March**

- Couples begin to establish stronger ties (engagement) or experience weakening of established ones.
- Vocational choice causes anxiety and depression.
- "Sophomore slump": most have completed general studies—now what?

**April**

- "Senioritis" sets in.
- Anxiety over how grades will end up.
- Decision and direction over summer jobs or ministry.
- After spring break, it's hard for students to get refocused.

**May**

- Apprehension over leaving relationships established over the year.
- Seniors panic over leaving the security of Biola. ■

# Campus Life



## Student Transitions

Student Transitions exists to help your student with two of the biggest transitions they will face in their college years: coming in to college (SOS) and going out (senior transitions), along with providing some enjoyable recreation (Biola Live!) along the way. The purpose of SOS is to assist and serve new students and families with their transition process by providing tangible resources that help them connect to the community and establish an understanding of Biola's social, spiritual, and academic opportunities. SOS stands for Student Orientation Service. A diverse group of SOS leaders have been trained to help your student navigate their way as they enter this new community. The purpose of Biola Live! is to connect the Biola community to cultural experiences by providing affordable tickets to Los Angeles area events and attractions.

## Residence Life

Living on campus can be a new and challenging experience for your student, and the Residence Life staff is dedicated to supporting your son or daughter. Over 2,500 students live in our ten residence halls and two apartment communities. There are ten full-time staff members, who manage the living areas, and supervise them in-residence. Most of our full-time staff hold or are pursuing master's degrees in student affairs, ministry, education, or counseling. They are responsible for coordinating a multitude of services, programs and intentional activities focused on influencing your son or daughter's relational abilities and character development. On each residential floor there is a student Resident Assistant responsible for resourcing, supervision, and community development. The Residence Life experience has the potential of challenging and educating ►

your student as they connect their learning experiences with their living realities. Through living in our residence halls, your student will have experienced life in a community that fosters relational growth and development.

### Commuter Life

Commuter Life serves the commuter students of Biola, welcoming them into campus life, bridging them to core communities and vital resources—through community-building activities, intentional mentoring, and leadership development—for the purpose of holistic life transformation. The Collegium, Latin for Gathering Place, is our primary community for commuter students at Biola. This home-away-from-home—a beautifully appointed craftsman-style environment with a fully equipped kitchen, dining, fireplace, and work area, is open to all commuters with a paid membership of \$50 per semester. We highly encourage all commuter students to consider Collegium membership as a vital component of their Biola experience as well as participating in the various commuter events throughout the year!

### Off-Campus Housing Services

Off-Campus Housing Services seeks to facilitate successful off-campus living by providing access to housing and roommate search tools, local community resources, links to government legal information, and downloadable tools such as a Roommate Agreement, Lease Signing Checklist, and an Inventory Checklist for Moving In & Out.

<http://studentlife.biola.edu/OCHS>

### International Student Services

The mission of the department of International Student Services (ISS) is to serve, educate, and empower global undergraduate and graduate students at Biola University. Our intent is that our global students thrive in an increasingly



globally minded Biola community. Over 400 students (about 7% of the Biola student population) do not speak English as their first language and are citizens of countries other than the United States. Biola also has a large number of students from globally mobile families (missionary, military, business, and third culture “kids”). These students come here to study from over 40 different countries, and each one is a distinct and valuable gift to our community. The diversity that comes from their experiences enhances our environment of faith and learning. Their presence and scholarly contribution will assist the university in attaining its pursuit of becoming a recognized global center for Christian thought.

Our department works in partnership with other departments and volunteers from the surrounding community, to offer the following primary services for our international students:

- Cultural adjustment, transition, and acclimatization
- Financial counseling

- Academic advice and referrals to appropriate departments
- Counseling on global student issues
  - Practical services and support
  - Servant-Leadership development
  - Global ministry and education development

The ISS Department works with global students to provide a rich, diverse array of life experiences and co-curricular education for the Biola global student community. We seek to partner closely with many of the departments/divisions on campus, as well as churches, organizations, volunteers, and academic institutions outside the Biola campus in order to maximize cultural exchanges, provide intercultural training, and promote learning and development.

### Athletics

Biola is a member of the NAIA and currently offers eleven intercollegiate sports — eight men’s teams and nine women’s teams. Participants in this level of competition are usually recruited

by the team’s coach and often play on a partial athletics scholarship. For students who enjoy playing recreational competitive sports, Biola has an active and organized intramural sports program. Visit our website for sports news and team schedules.

### Chapel

University chapels are intended to bring the Biola community together regularly for worship, spiritual nurture and education regarding relevant issues facing our lives. The overall program is designed to assist students in their spiritual development, and therefore provides a number of different opportunities for spiritual growth. Because spiritual renewal is central to Biola’s mission and desire for each student, chapel attendance is required. Attendance is recorded, and chapel probation will result for those who fail to meet the requirement. These policies as well as the chapel calendar can be found at the chapel website.

### Department of Spiritual Life

The Department of Spiritual Life serves as a lighthouse to inspire students in their spiritual development. The focus is to challenge students to take intentional steps to develop a closer relationship with Christ and to share their testimony to the world. The Department of Spiritual Life offers a wide variety of spiritual development activities including opportunities to serve within and outside of the Biola community.

### Biola Counseling Center

Biola Counseling Center is a mental health facility that serves the counseling needs of the surrounding community, and the students, faculty, and staff of Biola University. Our counselors are aware of the unique challenges that students encounter in their transition to university life, and are committed to helping ►



students manage these difficulties. Services offered at BCC include individual psychotherapy for adults, adolescents, and children. Marital and pre-marital counseling are also provided. Biola students may receive counseling for the reduced price of \$15 per session.

To learn more about Student Life offices on campus, please visit <http://studentlife.biola.edu>

### Academic Advising

Academic Advising at Biola operates on a faculty-based model. This means that your students will have a faculty member in their major as an advisor. The Advising Center advises all currently undeclared students as well as those on first-semester academic probation.

Advisors, both faculty and those in the Advising Center, are available as a resource, but ultimately the student is responsible in ascertaining and fulfilling requirements to graduate. Additional resources are available for students through the Advising Center website: [biola.edu/advising](http://biola.edu/advising).

### Learning Center

The Learning Center serves the educational needs of Biola University's diverse student population by providing support and academic tutoring for a variety of general education and some upper division courses. Students are also able to receive academic counseling, and participate in workshops for developing study strategies.

The Learning Center works with and advocates for our students with disabilities (learning, physical, and psychological) providing appropriate and reasonable accommodations. The Learning Center also assists students with medical related situations due to injury and/or incident.

### Registrar Services

New students will have the opportunity to register for classes during the summer prior to arriving on campus. All new students should plan to submit their academic profile & deposit so they can complete the online registration, before arriving on campus.

Current students can select courses online for the upcoming term during the last month of each semester. All students must then complete the final registration process online during their scheduled time, in addition to the process in which they previously selected courses.

### Emergencies Affecting Course Work

- Provisions can be made for medical and other emergencies (e.g. family death, accident, or injury) by contacting the Vice Provost of undergraduate education at (562) 903-4713.

### Family Educational Rights and Privacy Act (FERPA)

In accordance with the Family Educational Rights and Privacy Act of 1974, Biola University has established guidelines regarding access to and release of educational records. In short, FERPA allows Biola to release "directory information" without the consent or knowledge of the student, unless the student has notified Biola in advance that such information is not to be released. Directory information may include the following: photo, name, address, telephone listing, e-mail address, date and place of birth, major field of study, participation in officially recognized activities and sports, weight and height of members of athletic teams, dates of attendance, degrees and awards received, and the most recent previous educational agency or institution attended. Parents need to be aware that their student's directory information is not available to them or anyone if the student has requested "Privacy." Other information about the ►

student, such as class schedules, grades, and student account balance is by law not available to parents unless the student has signed a written release.

### Financial Aid

It is the goal of the Financial Aid Office to help you and your student understand the financial aid process and, within government and university guidelines, maximize the amount of aid available to your student. You can speak to a Financial Aid Counselor either in person or by phone by calling (562) 903-4742.

It is important for students to complete the FAFSA each year, as early as possible after January 1. Funds for some awards are limited and they will be awarded on a first come, first served basis. Visit our website for more information about FAFSA. Visit [www.biola.edu/finaid](http://www.biola.edu/finaid) for more information.

Please note: if you are planning to apply for an additional loan (other than the Stafford), please allow at least three weeks for the process. Please keep in mind that the Accounting Office is not able to include the loan in your down payment until the lender has guaranteed the loan.

### Bursar Information

The Bursar Office in the Accounting Department is committed to assisting your student in meeting the financial obligations of attending Biola. Down payment estimates are mailed July 18th and December 18th for upcoming semesters. The down payment is part of the registration process and is required in order to complete registration.

Subsequent statements are mailed on the 18th of each month to the billing address indicated by the student during final registration. Three payment plans are available, two of which do not include finance charges. The extended payment plan accrues a

finance charge on any unpaid balance after October 15th (Fall semester) and after March 15th (Spring semester).

Account Counselors are available to help you with any questions you may have about your student's account. Information about the student account is released in compliance with FERPA. Questions regarding specific charges on the statement should be directed to the appropriate department. For your convenience, a departmental phone listing is included with your first statement.

Additional information can be found on their website. <http://biola.edu/offices/accounting>

### Campus Safety

#### A message from the Chief of Campus Safety:

On behalf of the Campus Safety Department, I would like to welcome you to Biola University. Biola is located in the city of La Mirada, which continues to rank as one of the safest communities in the region.

Campus Safety houses three internal divisions: patrol, emergency operations/communications and administration. The Patrol Division provides vehicular, foot and bike patrols to ensure the safety of our students, faculty, staff and visitors. Campus Safety officers are available 24 hours a day, 7 days a week. The Emergency Operations & Communications Division is responsible for the University's emergency mass cell phone notification system that can contact members of our campus community regarding any on-campus emergencies, the University telephone switchboard, and the system of security cameras that cover parking lots, residence hall entrances and other key areas. The Administration Division is responsible

for campus parking management, parking permits, and coordination of access requests to campus buildings.

Campus Safety coordinates all disaster preparedness and response. The University has an Emergency Response Team comprised of 12 departments whose response is crucial to managing major emergencies. This includes the ability to provide food, water, and basic medical needs to our students should the campus be cut off from public utility and other services.

Campus crime statistics associated with the federal government's student-right-to-know laws can be found on our website [www.biola.edu/offices/campus\\_safety](http://www.biola.edu/offices/campus_safety). All statistics are reported to the U.S. Department of Education annually and are published for the review of our community. Our Campus Safety Department is staffed by dedicated employees who care deeply for the safety of our campus community and are committed to providing the best possible service at all times.

Sincerely,

**John Ojeisekhoba**  
Chief, Campus Safety

### Student Health Services

The mission of Student Health Services is to glorify God by providing holistic health care in a competent compassionate manner. We are committed to empower and educate students to achieve wellness of body, mind and spirit through self-care, medical intervention and a nurturing environment.

The Health Center operates like a doctor's office, by appointments only, with the exception of life-threatening emergencies. Forty percent of the daily appointments can be scheduled ahead and sixty percent are same day appointments. The Health Center is run by 12 staff members including the Director, Physician, Psychiatrist, Nurse Practitioners, Registered Nurses, EMT, and various office support positions. The front office starts booking appointments everyday Monday - Friday at 8:00 am. There is no co-pay or fee for an office visit with the MD, Psychiatrist, NP, or RN.

**Phone:** (562) 903-4841  
**Fax:** (562) 906-4512

#### Office hours:

Monday – Friday 8:00 am – 5:00 pm.  
Saturday 11 am – 2 pm (Self-help medication only)  
Sunday 4 pm – 7 pm (Self-help medication only)  
(Hours may change slightly due to staffing availability)



After our office is closed there is an EMT on duty Monday - Friday from 5:00 pm until 1:00 am for Emergencies and first aid.

All enrolled students can access the Health Center regardless of the insurance they have.

There are fees for some services that are offered at the Health Center. Some of them are: lab work, medications, treatments, immunizations, and physical examinations.

Services offered at the Health Center include:

- Illness Care such as: sore throat, cough, fever, skin problems, ear pain, trouble breathing, asthma, trauma, and emergencies
- Wellness visits such as: physical exams, PAP smears, B/P checks, TB testing, immunizations
- Self – help Over the Counter medication program
- Health Pamphlets and brochures
- Nutritional counseling
- Health Education
- Travel consults
- Referrals for off campus health services

### Center for Career Development

Career planning is an on-going process. It involves exploring ones temperament, values, interests and skills in order to expand your self-knowledge and better evaluate ones career direction. It also involves exploration and experimentation in the world of work. The Center for Career Development desires to help students gain information and experience that will allow them to explore and formulate their career goals.

The Center for Career Development is located in the Student Services Building, across from Chase Gymnasium and is open Monday – Friday, 9:00 a.m. – 4:30 pm. For more information, visit [www.biola.edu/career](http://www.biola.edu/career)

### Student Employment

**Off Campus:** Through the Center for Career Development, the university maintains an Off-Campus Student Employment Office for the benefit of those students needing employment. They are located in the Student Services Building, across from the gym. There are a wide variety of job opportunities available. **On Campus:** Biola students are encouraged to use the services of the On-Campus Student Employment Office, which is within the Human Resources Department. Biola employment may provide a means for students to earn funds to cover a portion of their college expenses, and also offers opportunities to gain skills and experience to reinforce students' educational and career goals.

It is recommended that all undergraduate students limit their work to 20 hours per week when classes are in session, and 40 hours per week when classes are not in session. Non-immigrant students attending on F-1 visas are limited by law to these hours. To be hired, students should be prepared with two proofs of identification (original Social Security card, valid Driver's License, passport, or visa documentation).

### IT Helpdesk

The IT Helpdesk is here to assist students of Biola University with their computing and communication needs. We serve as the first point of contact for Biola Information Technology. We are physically located in the lower level of Metzger Hall.

We provide assistance in the areas of computer applications, hardware, phone services, and internet connections. We also support the email, print, and copy systems. We are available for walk-in, phone, email, or live-chat support.



### Bookstore

The Bookstore accepts personal checks as well as Visa, MasterCard and Discover. Textbooks may be ordered online or via phone at 1-800-MY-BIOLA. Students may also purchase textbooks (in store) with monies on their student account using a Book Slip. Book Slips are available in the Accounting Department.

### Computer Store

Located next to the Bookstore, the Biola Computer Store aids students with their technology purchases; offering exceptional pricing on Apple and Dell computer products through special academic agreements. Through agreements with Microsoft, Adobe and Macromedia, students can purchase popular software titles at up to 85% below retail pricing.

### Food Services

Biola provides an excellent food service program for all students, employees and guests. Bon Appetit, Biola's food service contractor, not only prepares the food for Café Biola, the Eagles' Nest, Common Grounds, the Coffee Cart, and the Talon, but also provides on-campus as well as off-campus catering. All on campus resident students are required to purchase one of the available meal plans.

Food service personnel are able to arrange for special diets as prescribed by a physician. Please submit a copy of the student's diet or dietary restrictions to the Café office. Sack or take-out meals are available if a student's class or work schedule keeps him or her from attending a meal. The student should sign up at the Café office.

The Café is closed for Thanksgiving break, Christmas break, and spring break. ■

WELCOME TO THE



Photo by Tom Griffithe. Courtesy of Anaheim/  
Orange County Visitor & Convention Bureau

Located in the heart of sunny Southern California is Anaheim and Orange County, a unique region with a dynamic metropolitan vibe, a population of more than 3 million people, a creative spirit and diversity of activities that make it one of the nation's most popular destinations. OC is world-famous for its theme parks, distinguished shopping centers, dynamic meeting venues and trendy beach towns.

The hub of the entertainment core in Orange County is centered in the city of Anaheim. History was made here in 1955 when Walt Disney built his dream theme park Disneyland, thus creating a new tourism industry that has continued to evolve ever since that time. Today, Anaheim is recognized as a leading vacation and business destination. It is home to The Disneyland Resort®, the Anaheim Convention Center—the largest convention center on the West Coast, Major League Baseball's Angels and National Hockey League's Anaheim Ducks.

### Fun Facts

**The Date Shack** – An original roadside stand, where milkshakes made from dates are still a local treat off Pacific Coast Highway. Mission San Juan Capistrano – one of California's 21 picturesque Spanish missions calls thousands of swallows back every March 19. All Star Sports – Anaheim is the home field to two professional teams with 'wings'.... Angels and Ducks. One-of-kind OC tastes and sights include: Balboa Bar, a vanilla ice cream bar dipped in warm chocolate and rolled in nuts or candy can be

found on Balboa Island. Local Guitar Heroes Leo Fender (inventor of the electric guitar) and surf guitar legend Dick Dale both came from Orange County and started their iconic music careers here. OC = Orange County. The popular TV show "The OC" successfully gave this region a new trendy 'nick' name "OC" and overnight international celebrity appeal. The name Anaheim is a blending of its Spanish and German settlers; "Ana" is Spanish for the nearby Santa Ana River and "heim" is the German word for home, so Anaheim literally means "Ana's home."

**Pageant of the Masters** – A Laguna Beach summertime evening 'must see' presentation of "living pictures" of classical and contemporary art works, come to life with real people posing as living masterpieces.

**Endless Summer** – the inspiration for the 1960's classic surfing poster came from Orange County's ideal beach views.

**The original Disney theme park** –Disneyland opened its doors in Anaheim in July of 1955, and the rest is history. Knott's Berry Farm's founder created the tasty fruit the Boysenberry. Knott's is popular for its homemade all-American fried chicken dinners, and its world famous mascot Snoopy.

**Mickey Mouse Ears You** – Disneyland's traditional black Mickey Mouse Ears hat is an old-school classic, but today's versions come in an assortment of themes, from a swash-buckling pirate mouse to bejeweled ears for that special princess.



Courtesy of Anaheim/Orange County  
Visitor & Convention Bureau

### The Beaches

Orange County's 42 miles of alluring coastline features lively beach towns, family fun, vibrant boardwalks and cool breezes in the warm California sun. The Orange County coastline is comprised of 6 beach cities, each offering its own unique brand of the Southern California experience. A day on the coast can include surf lessons, a romantic walk on the beach or a nighttime bonfire cookout.

**Seal Beach:** 1920's nostalgia, quaint neighborhoods and hometown charm

**Newport Beach:** Upscale shopping, kayaking, harbor cruises and bodyboarding

**Dana Point:** Fishing, sailing, historic tall ships, whale watching

**Huntington Beach:** Surfwear shops, bustling boardwalk and infectious laid-back atmosphere

**Laguna Beach:** Walkable downtown, snorkeling, tide pools, art festivals

**San Clemente:** Antique shops, famous surfing spots, Spanish-style architecture, spectacular coastal views ■

# All About the O.C.



*Courtesy of Anaheim/Orange County Visitor & Convention Bureau*

## LOCATION

Orange County is located in the center of Southern California, about 30 miles south of Los Angeles and 90 miles north of San Diego. Anaheim, the second largest city in Orange County, serves as a central hub to many area attractions and sports venues. OC has 34 distinct cities, each with their own unique features, from world-class shopping, spectacular ocean views to prestigious universities. Here are a few of Orange County's well-known cities: Irvine, Newport Beach, Laguna Beach, Huntington Beach, Santa Ana, Costa Mesa, Fullerton and Orange.

## SIZE/POPULATION

- **798 square miles**
- **34 incorporated cities**
- **42 miles of coastline**
- **9 beaches**
- **3 harbors**
- **Nearly 3 million people in the OC**



*Courtesy of Anaheim/Orange County Visitor & Convention Bureau*

## CLIMATE

- The average temperature is 70 degrees.
- Summers are moderate to hot with cool evenings.
- Winters are mild with little rain.
- Approximately 70 percent of the days are bright and sunny.

## AIR ACCESS & AIRPORT FACILITIES

Orange County is accessible by four major airports.

*(approximate distances/times are from Anaheim):*

- Los Angeles International Airport (LAX) — 35 miles/56 km, 50 minutes
- John Wayne/Orange County Airport (SNA) — 13 miles/21 km, 25 minutes
- Ontario International Airport (ONT) — 36 miles/58 km, 45 minutes
- Long Beach Airport (LGB) — 18 miles/29 km, 30 minutes

## ACCOMMODATIONS

- Orange County has approximately 500 hotel properties and nearly 55,000 guest rooms.
- Accommodations range from budget friendly to luxury. More than 150 properties and
- nearly 20,000 guest rooms are in Anaheim.

## SAFETY

Anaheim/Orange County is a safe, family-friendly destination. The Anaheim/Orange County Visitor & Convention Bureau works closely with the Anaheim Police Department and the Southern California Tourism Safety & Security Association to provide visitor safety and security training to area hotels and attractions. Anaheim is one of only four U.S. cities with a specialized Tourist Oriented Policing Team and has become a role model for other cities and destinations around the United States.

## MEETINGS/ CONVENTIONS/LOCATION

Anaheim/OC is one of the country's top convention and meeting sites, filled with an array of outstanding meeting and event venues. The Anaheim Convention Center is the largest convention center on the West Coast with 1.6 million square feet of meeting and exhibit space. ■

**The Mediterranean Apartments**  
 Welcome to paradise! This prime community offers spacious apartment homes in a tropical setting, only 3 miles from your school. A 5% discount is extended to all Biola students as well as any seasonal specials. *Live in today and make 'The Mediterranean Apartments' your new home!*

11555 Santa Gertrudes Ave., Whittier, CA 90604  
 www.consensys.com (562) 947-2838

**CONSENSYS**  
 COMMUNITY DEVELOPMENT

# Biola University Campus Map

## BUILDING KEY

- |  |                                 |  |                          |
|--|---------------------------------|--|--------------------------|
| 9 Alpha Ch                                 | 52 E Dorothy English Hall       | 34 Marebun Hall /<br>Marina Auditorium | 15 Soccer Field / Track  |
| 58 A Archery Range                         | 52 A Duplicating Ctr.           | 43 Metzger Hall                        | 60 Softball Field        |
| 52 C Art Department                        | 32 Education /<br>Campus Safety | 38 Music in Worship                    | 36 Soubireu Hall         |
| 34 Art Gallery                             | 12 Emerson Hall                 | 47 Myers Hall / Talbot                 | 59 South Field           |
| 33 Bardwell Hall (Sci)                     | 3 Facilities Services           | 65 Olive Grove                         | 62 Stewart Hall          |
| 30 Bascom Field                            | 52 Fine Arts Bldg               | 53 Perez Hall                          | 35 Student Health Ctr.   |
| 88 Beachcomber Apt.                        | 27 Plant Fountain               | 20 Pool                                | 25 Student Mail Services |
| Bell Tower                                 | 7 Gatehouse                     | 13 Power Plant                         | 26 Student Union Bldg    |
| 28 Bookstore /<br>Student Services         | La Mirada Bldg                  | 55 Production Ctr                      | 39 Suttheland Hall       |
| 91 Bright Medical Bldg                     | Gatehouse                       | 50 Professional Bldg                   | 58 Tennis Ctr.           |
| 50 Business Bldg                           | 52 G Grove Modules              | 57 D Road Hall                         | 52 Theatre 21            |
| 23 Cafeteria                               | 63 Hart Hall                    | 41 Rose Hall                           | 7 Thompson Hall          |
| 46 Cabrera Chapel /<br>Feinberg Hall       | 61 Hope Hall                    | 44 Rose of Sharon                      | 86 Tradewinds Apt        |
| 32 Campus Safety /<br>Education            | 11 Horton Hall                  | Prayer Chapel                          | 84 Tropicana Apt.        |
| 2 Central Receiving                        | 6 Li Apt                        | 70 Rosecans Apt #1                     | 5 Waldn Apt              |
| 18 Chase Gym /<br>Fitness Ctr              | 37 Library                      | 71 Rosecans Apt #2                     | 52 B White Hall          |
| 16 Crowell Hall /<br>Conservatory of Music | 88 Lido Apt                     | 72 Rosecans Apt #3                     |                          |
|  | 52 F Locker Bldg                | 73 Rosecans Apt #4                     |                          |
|  | 26 Mail Services                | 82 Rosecans Apt #5                     |                          |
|  |                                 | 58 B Sand Volleyball Court             |                          |
|  |                                 | 4 Sigma Chi                            |                          |

## PARKING INFORMATION

- Parking by permit only
- Visitor Parking is located in lot D (near #50) Use entrance 7
- Visitor permits available at the gatehouse, both at entrance 7 and 1
- Parking Lots are indicated using the letters A-R



13800 Biola Avenue  
La Mirada, California 90639-0001  
562-903-4732

1-800-OK-BIOLA

2011-2012

# Academic Calendar

## FALL SEMESTER 2011

August 19	New Students Arrive on Campus
August 20	Returning Students Arrive on Campus
August 19-20	Parents of New Students Orientation
August 19-23	New Student Orientation
August 24	Classes Begin/ Convocation
September 5 (no classes)	Labor Day Weekend
October 14-15	Biola Weekend
October 19-21	Torrey Memorial Bible Conference
November 23-27	Thanksgiving Recess
December 12-16	Final Exam Week

## INTERTERM 2011/2012

January 3	Classes Begin
January 16	Martin Luther King Day Observed
January 20	Final Day of Instruction

## SPRING SEMESTER 2012

January 25-28	New Student Orientation
January 30	Classes Begin/ Convocation
March 9	Grandparents Day
March 14-16	Missions Conference
April 6-15	Easter Recess
May 21-25	Final Exam Week
May 26	Undergraduate Commencement

## SUMMER 2012

May 27	Move into Summer Housing
May 29- June 15	First Summer Session
June 18- July 20	Second Summer Session

**Welcome Biola University students!**  
Buy select Dell PCs, get an Xbox 360® 4GB.\*

Students only, get an Xbox 360® when you purchase select Dell PCs with Windows 7® for \$699.99 or more.\*



**NEW Dell™ Inspiron™ 14R**  
Enjoy a laptop that's light, mobile and ideal for your on-the-go lifestyle  
**\$699.99**

- New 2nd gen Intel® Core™ i3 processor
- Genuine Windows™ 7 Home Premium
- 4GB Memory\*, 500GB\* Hard Drive

**SWITCH** by design studio  
Black SWITCH lid comes standard. Optional SWITCH by Design Studio lids starting at **\$34.99**

**Your student benefits:**

- Best price guarantee\* on Dell consumer PCs
- Up to 30% or more off select Dell consumer PCs
- 10% off Dell mobility products
- Free 3-5 day shipping on systems \$699 and above before taxes and fees\*

**Shop now** ▶ [dell.com/dellu/biola](http://dell.com/dellu/biola)

Student exclusive. Use your member ID to order: **US1630990**

Your PC. simplified. 



**Holiday Inn Buena Park Hotel & Conference Center**


This Holiday Inn is a 248 full service hotel, focused on serving both business and leisure travelers. We offer a picturesque lobby, charming restaurant, cozy lounge and the area's largest outdoor heated pool and whirlpool. Centrally located to the 91 and 5 FWY.

**AMENITIES**

- Complimentary shuttle service to Knott's Berry Farm and Disneyland
- Complimentary Parking
- Complimentary Wi-Fi in rooms and throughout the hotel
- Coffee and Tea Maker

When making reservations call 1-800 Holiday or 714-522-7000 and ask for the Biola rate  
7000 Beach Boulevard Buena Park CA 90620  
**714-522-7000 - www.hibuenapark.com**

**Wells Fargo La Mirada**  
15056 Rosecrans Ave.  
La Mirada, CA 90638  
714-521-1674



**wellsfargo.com**  
© 2011 Wells Fargo Bank, N.A. All rights reserved. Member FDIC. (560408\_02330)

# Helpful Contact Information

Academic Advising	(562) 903-4782
Accounting	(562) 903-4760
Admissions	(800) OK-BIOLA
Alumni Relations	(562) 903-4728
Associated Students and Student Missionary Union	(562) 903-4882
Athletic Info & Tickets	(562) 903-4887
Bookstore	(800) 692-4652
Cafeteria	(562) 903-4869
Campus Safety	(562) 903-4877
Center for Career Development	(562) 903-4875
Computer Store	(562) 903-4884
Conservatory of Music	(562) 903-4892
Counseling Center	(562) 903-4800
Directions Hotline	(562) 944-0351, ext. 5013

Disability Services	(562) 944-0351, ext. 5851
Financial Aid Office	(562) 903-4742
Health Center	(562) 903-4841
International Student Information	(562) 903-4874
IT Helpdesk	(562) 903-4740
Learning Center	(562) 906-4542
Mail and Parcel Services	(562) 944-0351, ext. 5475
Main University number	(562) 903-6000
On-Campus Housing	(562) 903-4874
Parent Relations	(800) 99-BIOLA
Registrar's Office	(562) 903-4720
Student Development	(562) 903-4874
Student Employment: On campus	(562) 944-0351, ext. 5214
Student Employment: Off campus	(562) 903-4758
Spiritual Life	(562) 903-4754



**20% OFF** ANY ONE ITEM IN THE STORE

To use online, go to:  
[www.biolabookstore.com](http://www.biolabookstore.com)  
 Use code: **bstore10**

Exceptions: Textbooks, theme park tickets, class rings, announcements and cap 'n' gowns.



**FRED'S AUTOMOTIVE**  
**COMPLETE CAR CARE**

**Fred Simpson**  
 Phone (562) 944-4836  
 Fax (562) 944-0042  
 14242 Telegraph Road  
 Whittier, CA 90604



**While In La Mirada, Enjoy Our Hotel's Location!**

- 292 Guest Rooms
- 14 Suites
- Over 10,000 square feet of meeting space
- Free Wi-Fi
- Free Shuttle Service within five miles
- Free Parking
- Red Robin Restaurant on-site
- Biola University Campus is only one mile away

**Don't be left out, book your reservations for 2011 Graduation and Parents Weekend now!**



Stay You.



**Holiday Inn**  
**LA MIRADA**

14299 Firestone Blvd.  
 La Mirada, CA 90638  
 (Just 1 mile from Biola)  
**(714) 739-8500**  
[www.hislamirada.com](http://www.hislamirada.com)

**THE CYCLERY**  
**BIKE SHOP**

**GIANT KHS Cannondale**

**FOR THE RIDE OF YOUR LIFE!**

**15037 Imperial Hwy, La Mirada 562-943-2453**

Mountain - Road - Commuter - Cruisers - BMX - Fixed Gear - Hybrid - Comfort

**10-7 Mon-Fri SALES - SERVICE - REPAIRS - FUN!!! 10-6 Sat-Sun**

This Guide brought to you by these

# Proud Supporters of Biola

## ACCOMMODATIONS

**Holiday Inn - Buena Park & Conference Center**  
Please see ad on p. 25.

**Holiday Inn Select Hotel - La Mirada**  
Please see ad on p. 28.

## APARTMENTS & HOUSING

**Brookstone Apartment Homes**  
Please see ad on facing page.

**Mediterranean Apartments**  
Please see ad on p. 23.

## BANKING & FINANCIAL SERVICES

**Wells Fargo**  
Please see ad on p. 27.

## SHOPPING & RETAIL

**Absolute Software**  
Please see ad on facing page.

**Biola Bookstore**  
Please see ad on p. 28.

**The Cyclery Bike Shop**  
Please see ad on p. 29.

**Dell**  
Please see ad on p. 26.

## STUDENT SERVICES

**Biola Counseling Center**  
Please see ad on facing page.

**Fred's Automotive**  
Please see ad on p. 29.



For advertising inquiries, please contact UPM Sales Consultant  
Jon Hydeman at (866) 721-1357 or email: [ask@universityparent.com](mailto:ask@universityparent.com)



# BIOLA

UNIVERSITY

*Brookstone Apartment Homes*

Call or Click Today!  
(714) 994-5151  
[BrookstoneAptHomes.com](http://BrookstoneAptHomes.com)

We offer spacious 1 and 2 bedroom renovated apartment homes just minutes away from Biola. We are a gated, pet friendly community with covered parking, swimming pool, Jacuzzi, laundry facility, and clubhouse. We have free WiFi in our common areas.

7400 Artesia Blvd. - Buena Park, Ca. 90621

**Biola Counseling CENTER**

12625 La Mirada Blvd.  
Suite 202  
La Mirada, CA 90638

[www.biolacounselingcenter.org](http://www.biolacounselingcenter.org)  
[counseling.center@biola.edu](mailto:counseling.center@biola.edu)

Biola Counseling Center is a community mental health clinic that also serves the counseling needs of the students, faculty, and staff of Biola University. BCC provides psychotherapy and psychological testing services for adults, adolescents, and children. Our clinicians integrate a Biblical worldview with the science and theory of psychotherapeutic practice. This perspective is used to help clients improve their ability to manage the emotional challenges of daily living. The majority of BCC therapists are associated with Biola University's Rosemead School of Psychology, either as clinical faculty, post-doctoral therapists, or doctoral students who are supervised by licensed clinical psychologists. If you are in need of psychological services, please call (562) 903-4800 for more information.

It's not just her laptop—it's her shot at a 4.0.

Others track, we get stolen laptops back.



Protect it now and save, visit  
[www.lojackforlaptops.com/student](http://www.lojackforlaptops.com/student)

# UNIVERSITY PARENT

# Brings You

the Online



# Biola

# GUIDE



This online resource for parents  
features the best places to

shop

eat

relax

stay

unwind

play

explore

visit

and more...

[www.universityparent.com/biola](http://www.universityparent.com/biola)

**Or find us with your mobile device!**

Simply download a QR scanner app to your  
mobile device and scan the QR code to the right!

